

Drifter

People always called you "lazy." Your folks always told you to get a job. Your former beau left when you refused to get out and "make something of yourself." They simply couldn't understand you. Yours is a higher path, and has its own set of risks,...and rewards.

Perhaps you are the wannabe writer, moving from one backend, backward, and hopeless job to another while slamming away at the keyboard in all of your free time. Perhaps you are the wannabe actor, migrating from city to city, working a bit to pay bills, and looking for that big break. Perhaps you are a philosopher, studying the human race while you explore the vast reaches of the world, the works of ancient wisdom taking up more space in your travel bags than your underwear. Magic and psychic phenomena? Sure. Got that book by that obscure researcher right here in my bag,...

Drifter

A follower of an aimless life, moving from place to place without a fixed job. Your character's recommended highest characteristics are:

Dexterity, Endurance, Intelligence
(*Dex, End, Int*)



Step 1: Qualifications or Draft

Make the Qualifications check by rolling 2D6 and adding (or subtracting) the modifier for your character's Dexterity. You must roll the indicated number or higher:

Qualifications 5+ (*Dex*)

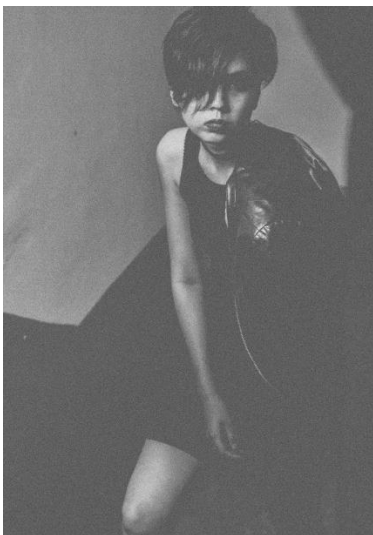
If you succeed, go to **Step 2: Begin at Rank-0** for Drifter, next column.

If you fail, roll on the Draft table:

Draft

| Roll | Career / School |
|------|-----------------|
| 1 | Soldier |
| 2 | Technician |
| 3 | Entertainer |
| 4 | Merchant |
| 5 | Rogue |
| 6 | Enochian |

and then go to **Step 2: Begin at Rank-0** of the playbook for the career or school you were drafted into.



Step 2: Begin at Rank-0

At starting Rank-0 you have the following skills:

- Wheeled Vehicle-0
- Linguistics-0 (your native language and English)
- Melee Combat-0** (cascade skill: select one component skill of the cascade from the "Skills List")
- Streetwise-1

Note these on your character sheet under "Skills."

Step 3: Career Term

Proceed through a) Survival, b) Advancement, c) Special Op's, and d) Aging to complete one career term.

a) Survival

Make the Survival check by rolling 2D6 and adding (or subtracting) the modifier for your character's Endurance. You must roll the indicated number or higher:

Survival 5+ (*End*)

If you succeed the Survival check, choose one of the Skills Tables on the next page. You may only choose the Advanced Skills table if your character's Education is 8+. Then, roll 1D6 to gain one skill from the table you chose. Note your new skill on your character sheet.

Gaining Skills
 Unless the skill indicates [Skill Name]-0 you receive a new skill at level 1: [Skill Name]-1. If your character already possesses a skill and you roll that skill again, increment that skill higher by one. For example, if you character has Recon-1 and you roll Recon again, your skill is now Recon-2. Gun Combat-0 becomes Gun Combat-1, etc.

If you fail the Survival check, you do not gain a skill, and you may not go to b) Advancement. Instead, proceed directly to c) Special Op's.



b) Advancement

Make the Advancement check by rolling 2D6 and adding (or subtracting) the modifier for your character's Intelligence. You must roll the indicated number or higher:

Advancement 7+ (Int)

If you succeed the Advancement check, choose one of the Skills Tables (Advanced Skills requires Edu 8+). Then, you may choose the new skill rather than rolling for it. Note your new skill. You also proceed one rank higher on the Rank & Skills table, below. Also note any new skill you receive if you reach Rank-3.

Rank & Skills

| Rank | Rank & Skills |
|------|--|
| 0 | <i>Waif</i> Wheeled Vehicle-0 Linguistics-0 Melee Combat-0 Streetwise-1 |
| 1 | <i>Hobo</i> |
| 2 | <i>Migrant</i> |
| 3 | <i>Traveler</i> Leadership-1 |
| 4 | <i>Laborer</i> |
| 5 | <i>Visitor</i> |
| 6 | <i>Wanderer</i> |

Regardless of whether you succeed the Advancement check, proceed to c) Special Op's.

c) Special Op's

Make the Special Op's check by rolling 2D6. You must roll the indicated number or higher:

Special Op's 7+

If you succeed, choose one of the Skills Tables (Advanced Skills requires Edu 8+). Then, roll 1D6 to gain one skill from the table you chose. Note your new skill.

Skills Tables*Personal Skills*

| Roll | Skill / Characteristic |
|------|------------------------|
| 1 | +1 Int |
| 2 | +1 Dex |
| 3 | +1 End |
| 4 | Athletics |
| 5 | Melee Combat |
| 6 | Gambling |

Service Skills

| Roll | Skill |
|------|----------------------|
| 1 | Streetwise |
| 2 | Construction Vehicle |
| 3 | Gun Combat |
| 4 | Melee Combat |
| 5 | Recon |
| 6 | Wheeled Vehicle |

Specialist Skills

| Roll | Skill |
|------|---------------------|
| 1 | Civil Engineering |
| 2 | Melee Combat |
| 3 | Carousing |
| 4 | Streetwise |
| 5 | Gambling |
| 6 | Broker |

Advanced Skills (requires Edu 8+)

| Roll | Skill |
|------|--------------------|
| 1 | Security |
| 2 | Computer |
| 3 | Jack of all Trades |
| 4 | Medical: Human |
| 5 | Linguistics |
| 6 | Bureaucracy |

Cascade skills are shown in **bold**. Cascade skills are made up of two or more component skills. When your character receives a cascade skill, you must select one component skill of the cascade skill from the "Skills List."

d) Aging

Note your character's age. The character begins at age 18, but each career term lasts 4 years, so upon first completing this step your character is age 22.



You may either go to Step 4: Muster Out or enter a new career term by repeating a) Survival, b) Advancement, c) Special Op's, and d) Aging.

The maximum number of career terms you may attend without penalty is four. For the fifth term you may subtract your Strength score by 1 or lose 1 level in a skill. For the sixth term you may subtract your Dexterity score by 1 or lose 1 level in a skill. For the seventh term you may subtract your Strength and Dexterity scores each by 1 or lose 2 levels in any two skills. The absolute maximum number of career terms is seven

Step 4: Muster Out

For each term served, you receive one roll of 1D6 on the Cash Benefits table. If your character is rank 4 or higher, add +1 to the roll. These credits may then be spent to purchase equipment for your character.

Cash Benefits

| Roll | Credits |
|------|---------|
| 1 | 0 |
| 2 | 1,000 |
| 3 | 2,000 |
| 4 | 5,000 |
| 5 | 5,000 |
| 6 | 10,000 |
| 7 | 10,000 |

Also, for each term served, you may choose one benefit from the Material Benefits table. It helps to choose something for which your character has the correct skill. For instance, a Medical Kit may only be used adequately if the character has the Medical skill. Choosing a weapon makes the most sense if the character possesses the relevant weapon skill.

Material Benefits

| |
|----------------------------------|
| Kiwi Junior Model-0 Laptop |
| Ranged Weapon (full ammo) |
| Medical Kit-1 |
| Melee Weapon |
| Ordinary Familiar, Large |
| Camping Gear-1 |
| Wheeled Vehicle |

Material benefits shown in **bold** are a category in "Equipment." Choose one item from that category in the "Equipment" chapter.

Step 5: Equipment & Encumbrance

Purchase any items you think your character might need for the adventure from "Equipment."

Calculate your character's Encumbrance Limit. This is 10+ your character's Strength DM. For instance, a character with a Strength of 9 has a Str DM of +1, for an Encumbrance Limit of 11. A character with a Strength of 5 has a Str DM of -1, for an Encumbrance Limit of 9. Note the Encumbrance Limit on the character sheet.

On the character sheet jot down the equipment's name, its encumbrance, and any notes about its use. If you have an Encumbrance Limit of 10, and your equipment totals up to an Encumbrance of 11 or higher, your character must take a -2 DM to all skill rolls.

Step 6: Combat Power

Calculate your character's Combat Power. Combat Power is an indication of how lethal your character is in combat. To calculate it, add up the following values:

Characteristic DM's for: Str + Dex + End
+

Skill Level/DM's for: Athletics + Gun Combat + Melee Combat
+

of dice of the single weapon possessed by the character which does the most damage + armor

Note your character's Combat Power on the character sheet.

Multiple Careers & Schools

After you Muster Out, you may make a Qualifications check for another career or school. But, there is a -2 DM to the roll. Also, aging effects and term limit rules as stated above apply to the new terms gained in the new career or school.

